



PLS1 rabbit pAb

Cat No.:ES10002

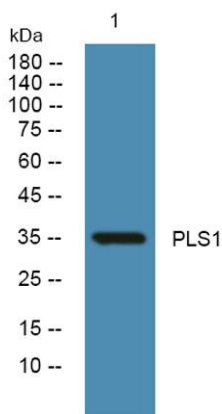
For research use only

Overview

Product Name	PLS1 rabbit pAb
Host species	Rabbit
Applications	WB;ELISA
Species Cross-Reactivity	Human;Rat;Mouse;
Recommended dilutions	WB 1:500-2000 ELISA 1:5000-20000
Immunogen	Synthesized peptide derived from human protein . at AA range: 170-250
Specificity	PLS1 Polyclonal Antibody detects endogenous levels of protein.
Formulation	Liquid in PBS containing 50% glycerol, 0.5% BSA and 0.02% sodium azide.
Storage	Store at -20°C. Avoid repeated freeze-thaw cycles.
Protein Name	Phospholipid scramblase 1 (PL scramblase 1) (Ca ²⁺)-dependent phospholipid scramblase 1 (Erythrocyte phospholipid scramblase) (MmTRA1b)
Gene Name	PLSCR1
Cellular localization	Cell membrane ; Single-pass type II membrane protein . Cell membrane ; Lipid-anchor ; Cytoplasmic side. Nucleus . Cytoplasm . Cytoplasm, perinuclear region . Localizes to the perinuclear region in the presence of RELT (PubMed:22052202). Palmitoylation reg
Purification	The antibody was affinity-purified from rabbit antiserum by affinity-chromatography using epitope-specific immunogen.
Clonality	Polyclonal
Concentration	1 mg/ml
Observed band	34kD
Human Gene ID	5359
Human Swiss-Prot Number	O15162
Alternative Names	
Background	cofactor:Calcium.,function:May mediate accelerated ATP-independent bidirectional transbilayer



migration of phospholipids upon binding calcium ions that results in a loss of phospholipid asymmetry in the plasma membrane. May play a central role in the initiation of fibrin clot formation, in the activation of mast cells and in the recognition of apoptotic and injured cells by the reticuloendothelial system.,function:May play a role in the antiviral response of interferon (IFN) by amplifying and enhancing the IFN response through increased expression of select subset of potent antiviral genes. May contribute to cytokine-regulated cell proliferation and differentiation.,induction:By phosphorylation by PKC. Induced by INFB1 in response to a viral infection.,online information:Scramblase entry,PTM:Known to be palmitoylated at one, yet undefined, site.,similarity:Belongs to the phospholipid scramblase family.,subunit:Interacts with ABL.,tissue specificity:Expressed in platelets, erythrocyte membranes, lymphocytes, spleen, thymus, prostate, testis, uterus, intestine, colon, heart, placenta, lung, liver, kidney and pancreas. Not detected in brain and skeletal muscle.,



Western blot analysis of lysates from DU145 cells, primary antibody was diluted at 1:1000, 4° over night