



ELK Biotechnology

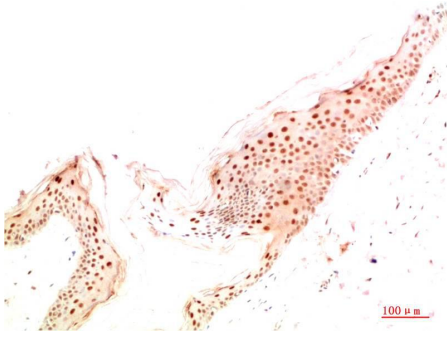
ATG14L Rabbit pAb

Catalog NO.: EA354

For research use only.

Overview

Product name	ATG14L Rabbit polyclonal antibody
Source	Rabbit
Applications	IHC
Species reactivity	Human, Mouse, Rat
Recommended dilutions	Immunohistochemistry:1/200-500 NOTE: Optimal dilutions should be determined by the end user.
Immunogen	Recombinant Protein
Species	Human
Storage	PBS with 0.02% sodium azide and 50% glycerol pH 7.4. Store at -20° C. Avoid repeated freeze-thaw cycles.
Isotype	IgG
Clonality	Polyclonal
Concentration	1 mg/ml
Observed band	55kDa
GeneID (Human)	22863
Human Swiss-Prot No.	Q6ZNE5
Cellular localization	Cytoplasm, Cytoplasmic vesicle, Endoplasmic reticulum, Membrane
Alternative Names	ATG14, KIAA0831, Autophagy-related protein 14-like protein antibody
Background	ATG14 is a autophagy-related protein. The serine/threonine kinase ULK1 phosphorylates Atg14 at Ser29 to promote autophagosome formation.



Immunohistochemical analysis of paraffin-embedded Human Skin Tissue using ATG14 (EA354) Rabbit pAb diluted at 1:500.