



ELK Biotechnology

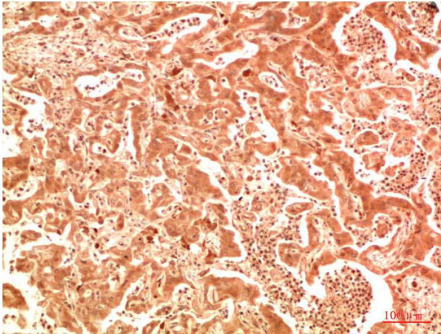
ATG7 Rabbit pAb

Catalog NO.: EA351

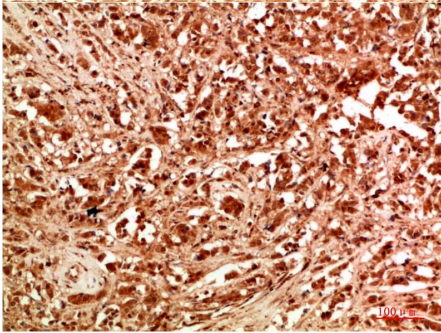
For research use only.

Overview

Product name	ATG7 Rabbit polyclonal antibody
Source	Rabbit
Applications	IHC
Species reactivity	Human, Mouse, Rat
Recommended dilutions	Immunohistochemistry:1/100-200 NOTE: Optimal dilutions should be determined by the end user.
Immunogen	Recombinant Protein
Species	Human
Storage	PBS with 0.02% sodium azide and 50% glycerol pH 7.4. Store at -20° C. Avoid repeated freeze-thaw cycles.
Isotype	IgG
Clonality	Polyclonal
Concentration	1 mg/ml
Observed band	78kDa
GenID (Human)	10533
Human Swiss-Prot No.	O95352
Cellular localization	Cytoplasm
Alternative Names	APG7, GSA7, Autophagy related protein 7
Background	The molecular machinery of autophagy was largely discovered in yeast and referred to as autophagy-related (Atg) genes. Formation of the autophagosome involves a ubiquitin-like conjugation system in which Atg12 is covalently bound to Atg5 and targeted to autophagosome vesicles. This conjugation reaction is mediated by the ubiquitin E1-like enzyme Atg7 and the E2-like enzyme Atg10.



Immunohistochemical analysis of paraffin-embedded Human Hepatocarcinoma Tissue using ATG7 (EA351) Rabbit pAb diluted at 1:200



Immunohistochemical analysis of paraffin-embedded Human Breast Carcinoma Tissue using ATG7 (EA351) Rabbit pAb diluted at 1:200.