



ELK Biotechnology

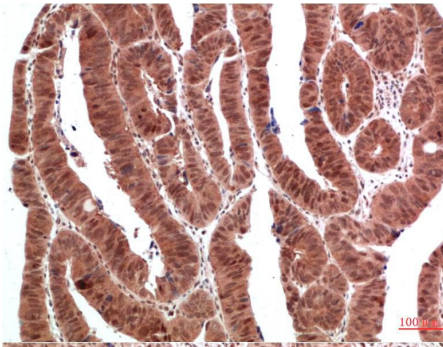
ERK1/2 Rabbit pAb

Catalog NO.: EA331

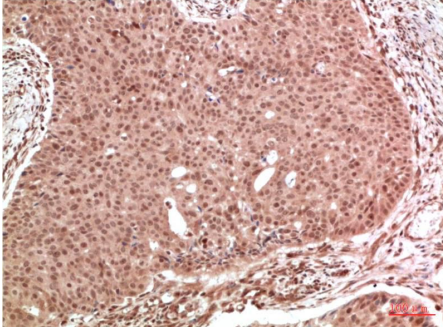
For research use only.

Overview

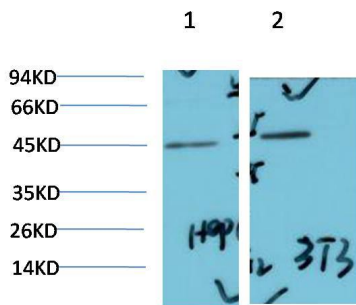
Product name	ERK1/2 Rabbit polyclonal antibody
Source	Rabbit
Applications	WB, IHC
Species reactivity	Human, Mouse, Rat
Recommended dilutions	WesternBlot:1/1000-2000 Immunohistochemistry:1/50-100 NOTE: Optimal dilutions should be determined by the end user.
Immunogen	Recombinant Protein
Species	Human
Storage	PBS with 0.02% sodium azide and 50% glycerol pH 7.4. Store at -20° C. Avoid repeated freeze-thaw cycles.
Isotype	IgG
Clonality	Polyclonal
Concentration	1 mg/ml
Observed band	44,42kDa
GenElD (Human)	5594/5595
Human Swiss-Prot No.	P27361/P28482
Cellular localization	Nucleus
Alternative Names	MAPK, Mitogen-activated protein Kinase, PRKM2,MK01
Background	Mitogen-activated protein kinases (MAPKs) are a widely conserved family of serine/threonine protein kinases involved in many cellular programs such as cell proliferation, differentiation, motility, and death. The p44/42 MAPK (Erk1/2) signaling pathway can be activated in response to a diverse range of extracellular stimuli including mitogens, growth factors, and cytokines and is an important target in the diagnosis and treatment of cancer.



Immunohistochemical analysis of paraffin-embedded Human Colon Carcinoma Tissue using ERK1/2 (EA331) Rabbit pAb diluted at 1:100



Immunohistochemical analysis of paraffin-embedded Human Breast Carcinoma Tissue using ERK1/2 (EA331) Rabbit pAb diluted at 1:100



Western blot analysis of 1) HepG2 Cell Lysate, 2) 3T3 Cell Lysate using ERK1/2 (EA331) Rabbit pAb diluted at 1:2000