



ELK Biotechnology

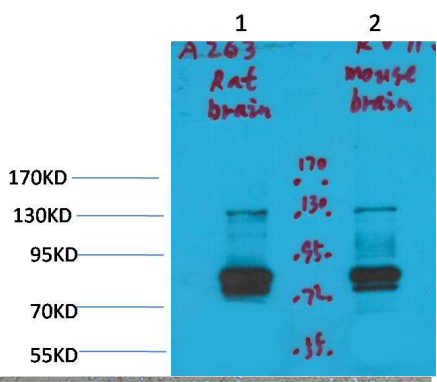
Kv11.3 Rabbit pAb

Catalog NO.: EA314

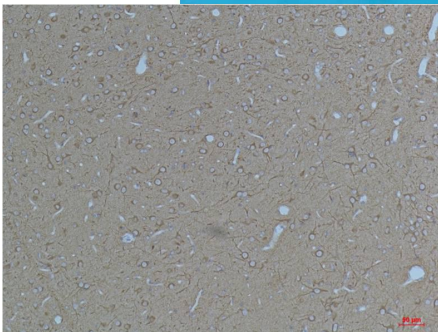
For research use only.

Overview

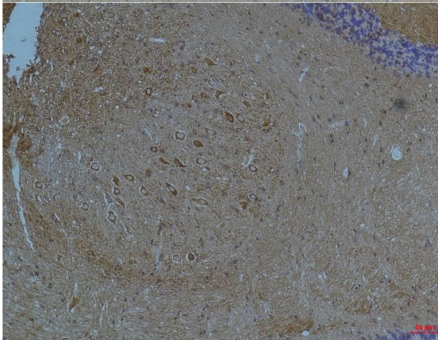
| | |
|-----------------------|---|
| Product name | Kv11.3 Rabbit polyclonal antibody |
| Source | Rabbit |
| Applications | WB, IHC |
| Species reactivity | Human, Rat, Mouse |
| Recommended dilutions | WesternBlot:1/1000-2000 Immunohistochemistry:1/100-200 NOTE: Optimal dilutions should be determined by the end user. |
| Immunogen | Synthetic Peptide |
| Species | Human |
| Storage | PBS with 0.02% sodium azide and 50% glycerol pH 7.4. Store at -20° C. Avoid repeated freeze-thaw cycles. |
| Isotype | IgG |
| Clonality | Polyclonal |
| Concentration | 1 mg/ml |
| Observed band | 83135kDa |
| GeneID (Human) | 90134 |
| Human Swiss-Prot No. | Q9NS40 |
| Cellular localization | Membrane |
| Alternative Names | EAG2,H EAG2,KCNH5 |
| Background | N/A |



Western blot analysis of 1) Rat Brain Tissue, 2) Mouse Brain Tissue, 3) HeLa with Kv11.3 Rabbit pAb EA314 diluted at 1:2,000.



Immunohistochemical analysis of paraffin-embedded Rat Brain Tissue using Kv11.3 (EA314) Rabbit pAb diluted at 1:200.



Immunohistochemical analysis of paraffin-embedded Mouse Brain Tissue using Kv11.3 (EA314) Rabbit pAb diluted at 1:200.