



ELK Biotechnology

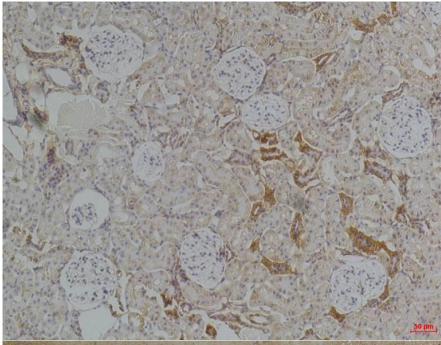
Kir4.1 Rabbit pAb

Catalog NO.: EA306

For research use only.

Overview

Product name	Kir4.1 Rabbit polyclonal antibody
Source	Rabbit
Applications	IHC
Species reactivity	Human, Rat, Mouse
Recommended dilutions	Immunohistochemistry:1/100-200 NOTE: Optimal dilutions should be determined by the end user.
Immunogen	Synthetic Peptide
Species	Human
Storage	PBS with 0.02% sodium azide and 50% glycerol pH 7.4. Store at -20° C. Avoid repeated freeze-thaw cycles.
Isotype	IgG
Clonality	Polyclonal
Concentration	1 mg/ml
Observed band	42kDa
GeneID (Human)	3766
Human Swiss-Prot No.	P78508
Cellular localization	Cell membrane, Membrane
Alternative Names	BIRK10,KCNJ10,potassium channel
Background	N/A



Immunohistochemical analysis of paraffin-embedded Rat Kidney Tissue using Kir4.1 (EA306) Rabbit pAb diluted at 1:200



Immunohistochemical analysis of paraffin-embedded Mouse Brain Tissue using Kir4.1 (EA306) Rabbit pAb diluted at 1:200.