



ELK Biotechnology

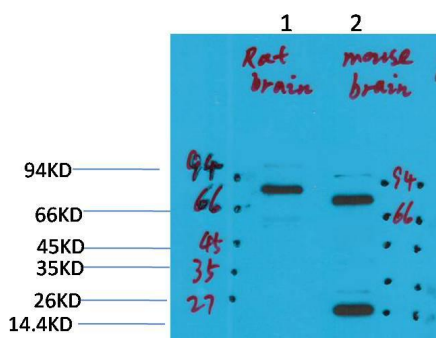
KCNN2(SK2) Rabbit pAb

Catalog NO.: EA300

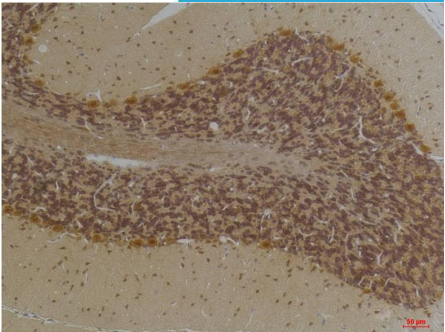
For research use only.

Overview

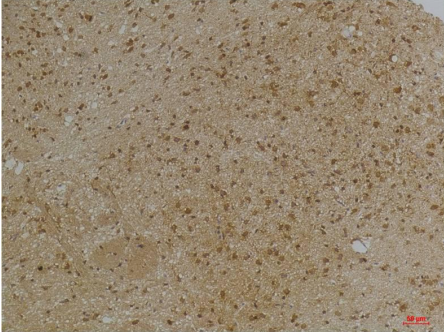
Product name	KCNN2(SK2) Rabbit polyclonal antibody
Source	Rabbit
Applications	WB, IHC
Species reactivity	Human, Rat, Mouse
Recommended dilutions	WesternBlot:1/1000-2000 Immunohistochemistry:1/100-200 NOTE: Optimal dilutions should be determined by the end user.
Immunogen	Synthetic Peptide
Species	Human
Storage	PBS with 0.02% sodium azide and 50% glycerol pH 7.4. Store at -20° C. Avoid repeated freeze-thaw cycles.
Isotype	IgG
Clonality	Polyclonal
Concentration	1 mg/ml
Observed band	70,26kDa
GeneID (Human)	3781
Human Swiss-Prot No.	Q6PJI0
Cellular localization	Membrane
Alternative Names	Kca2.2, hsk2, skca2
Background	Forms a voltage-independent potassium channel activated by intracellular calcium. Activation is followed by membrane hyperpolarization.



Western blot analysis of 1) Rat BrainTissue, 2)Mouse Brain Tissue, 3) HepG2 with KCNN2(SK2) Rabbit pAb EA300 diluted at 1:2,000.



Immunohistochemical analysis of paraffin-embedded Human BrainTissue using KCNN2(SK2) (EA300) Rabbit pAb diluted at 1:200.



Immunohistochemical analysis of paraffin-embedded Mouse BrainTissue using KCNN2(SK2) (EA300) Rabbit pAb diluted at 1:200.