



# ELK Biotechnology

Connexin-26 Rabbit pAb

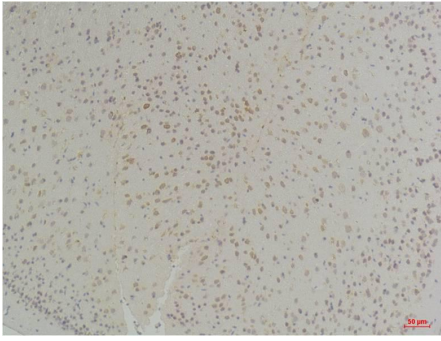
Catalog NO.: EA280

For research use only.

## Overview

---

Product name	Connexin-26 Rabbit polyclonal antibody
Source	Rabbit
Applications	IHC
Species reactivity	Human, Mouse
Recommended dilutions	Immunohistochemistry:1/100-200 <b>NOTE: Optimal dilutions should be determined by the end user.</b>
Immunogen	Synthetic Peptide
Species	Human
Storage	PBS with 0.02% sodium azide and 50% glycerol pH 7.4. Store at -20° C. Avoid repeated freeze-thaw cycles.
Isotype	IgG
Clonality	Polyclonal
Concentration	1 mg/ml
Observed band	<b>26kDa</b>
GeneID (Human)	2706
Human Swiss-Prot No.	P29033
Cellular localization	Cell junction, Cell membrane, Gap junction, Membrane
Alternative Names	GJB2,CX26,DFNA3,DFNB1, HID,NSRD1,PPK
Background	One gap junction consists of a cluster of closely packed pairs of transmembrane channels, the connexons, through which materials of low MW diffuse from one cell to a neighboring cell.



Immunohistochemical analysis of paraffin-embedded Mouse Brain Tissue using Connexin-26 (EA280) Rabbit pAb diluted at 1:200.