



# ELK Biotechnology

CLIC4 Rabbit pAb

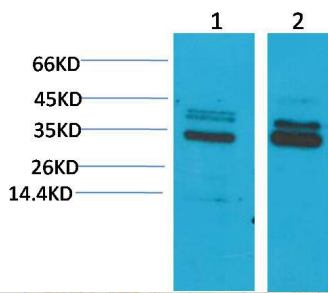
Catalog NO.: EA278

For research use only.

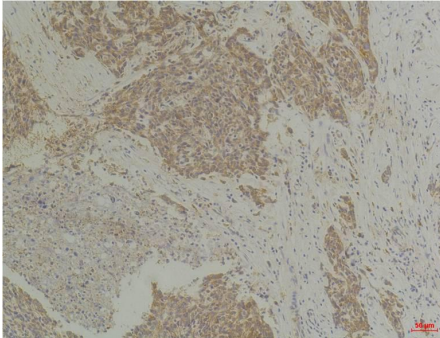
## Overview

---

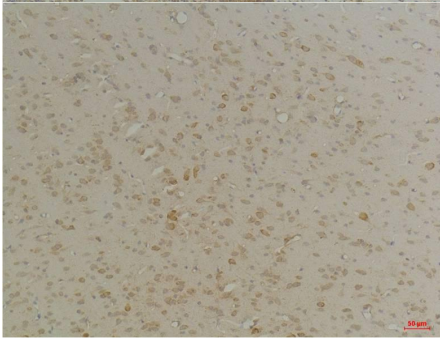
Product name	CLIC4 Rabbit polyclonal antibody
Source	Rabbit
Applications	<b>WB, IHC</b>
Species reactivity	<b>Human, Rat, Mouse</b>
Recommended dilutions	<b>WesternBlot:1/1000-2000</b> <b>Immunohistochemistry:1/100-200</b> <b>NOTE: Optimal dilutions should be determined by the end user.</b>
Immunogen	Synthetic Peptide
Species	Human
Storage	PBS with 0.02% sodium azide and 50% glycerol pH 7.4. Store at -20° C. Avoid repeated freeze-thaw cycles.
Isotype	IgG
Clonality	Polyclonal
Concentration	1 mg/ml
Observed band	<b>30kDa</b>
GenelD (Human)	25932
Human Swiss-Prot No.	Q9Y696
Cellular localization	Cell junction, Cell membrane, Cytoplasm, Cytoplasmic vesicle, Cytoskeleton, Membrane, Mitochondrion, Nucleus
Alternative Names	Chloride channel 4, FLJ38640,MC3S5,mtCLIC,p64H1,HUH1
Background	Membrane insertion seems to be redox-regulated and may occur only under oxidizing conditions. Involved in regulation of the cell cycle.



Western blot analysis of 1) Mouse Brain Tissue, 2)Rat Brain Tissue, with CLIC4 Rabbit pAb EA278 diluted at 1:2,000.



Immunohistochemical analysis of paraffin-embedded Human Breast Carcinoma using CLIC4 (EA278) Rabbit pAb diluted at 1:200.



Immunohistochemical analysis of paraffin-embedded Rat Brain Tissue using CLIC4 (EA278) Rabbit pAb diluted at 1:200.