



# ELK Biotechnology

CLIC1 Rabbit pAb

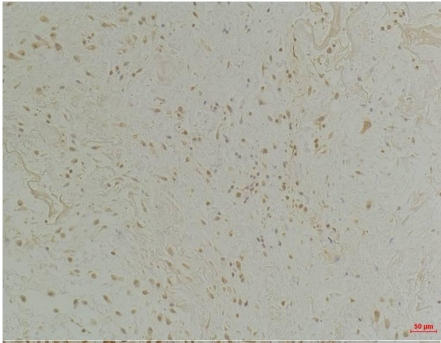
Catalog NO.: EA277

For research use only.

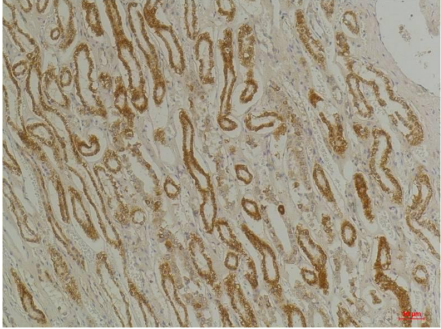
## Overview

---

|                       |   |
|-----------------------|---|
| Product name          | CLIC1 Rabbit polyclonal antibody  |
| Source                | Rabbit  |
| Applications          | IHC   |
| Species reactivity    | Human, Rat, Mouse   |
| Recommended dilutions | Immunohistochemistry:1/100-200<br><b>NOTE: Optimal dilutions should be determined by the end user.</b>                                  |
| Immunogen             | Synthetic Peptide   |
| Species               | Human   |
| Storage               | PBS with 0.02% sodium azide and 50% glycerol pH 7.4.<br>Store at -20° C. Avoid repeated freeze-thaw cycles.                             |
| Isotype               | IgG   |
| Clonality             | Polyclonal  |
| Concentration         | 1 mg/ml   |
| Observed band         | 30kDa   |
| GeneID (Human)        | 1192  |
| Human Swiss-Prot No.  | O00299  |
| Cellular localization | Cell membrane, Cytoplasm, Membrane, Nucleus   |
| Alternative Names     | Chloride channel ABP, NCC27,p64CLCP, RNCC,G6  |
| Background            | Membrane insertion seems to be redox-regulated and may occur only under oxidizing conditions. Involved in regulation of the cell cycle. |



Immunohistochemical analysis of paraffin-embedded Human Colon Tissue using CLIC1 (EA277) Rabbit pAb diluted at 1:200.



Immunohistochemical analysis of paraffin-embedded Human Kidney Tissue using CLIC1 (EA277) Rabbit pAb diluted at 1:200.