



ELK Biotechnology

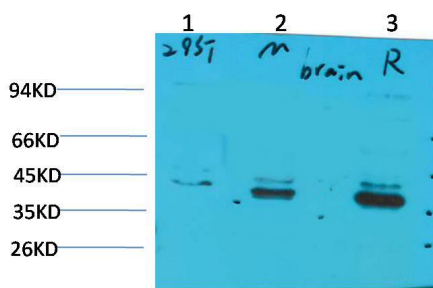
CABP2 Rabbit pAb

Catalog NO.: EA266

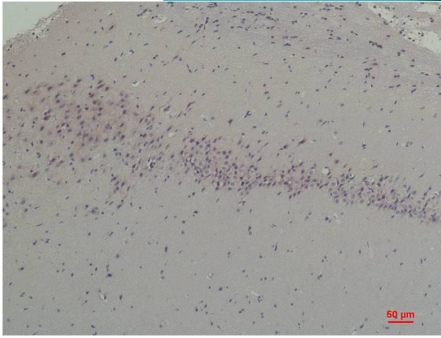
For research use only.

Overview

Product name	CABP2 Rabbit polyclonal antibody
Source	Rabbit
Applications	WB, IHC
Species reactivity	Human, Rat, Mouse
Recommended dilutions	WesternBlot:1/1000-2000 Immunohistochemistry:1/100-200 NOTE: Optimal dilutions should be determined by the end user.
Immunogen	Synthetic Peptide
Species	Human
Storage	PBS with 0.02% sodium azide and 50% glycerol pH 7.4. Store at -20° C. Avoid repeated freeze-thaw cycles.
Isotype	IgG
Clonality	Polyclonal
Concentration	1 mg/ml
Observed band	37kDa
GenelD (Human)	51475
Human Swiss-Prot No.	Q9NPB3
Cellular localization	Cell membrane, Cytoplasm, Golgi apparatus, Membrane
Alternative Names	DFNB93 antibody, CaBP2 antibody, Calcium-Binding Protein 2 antibody
Background	This gene belongs to a subfamily of calcium binding proteins that share similarity to calmodulin. Like calmodulin, these family members can likely stimulate calmodulin-dependent kinase II and the protein phosphatase calcineurin.



Western blot analysis of 1)293T, 2)Mouse Brain Tissue, 3) Rat Brain Tissue with CABP2 Rabbit pAb EA266 diluted at 1:2,000.



Immunohistochemical analysis of paraffin-embedded Rat Brain Tissue using CABP2 (EA266) Rabbit pAb diluted at 1:200.