



ELK Biotechnology

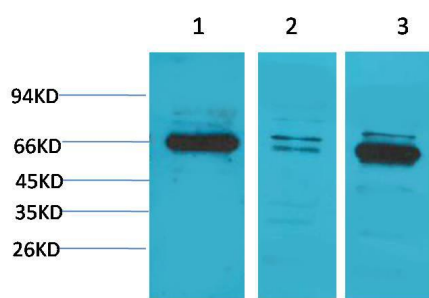
Bestrophin-1 Rabbit pAb

Catalog NO.: EA262

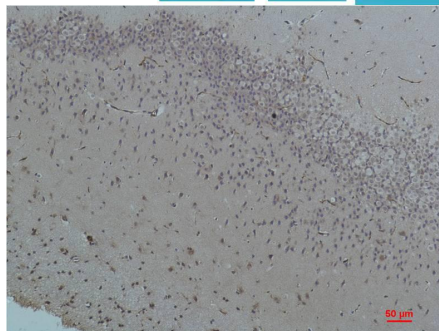
For research use only.

Overview

Product name	Bestrophin-1 Rabbit polyclonal antibody
Source	Rabbit
Applications	WB, IHC
Species reactivity	Human, Rat, Mouse
Recommended dilutions	WesternBlot:1/1000-2000 Immunohistochemistry:1/50-100 NOTE: Optimal dilutions should be determined by the end user.
Immunogen	Synthetic Peptide
Species	Human
Storage	PBS with 0.02% sodium azide and 50% glycerol pH 7.4. Store at -20° C. Avoid repeated freeze-thaw cycles.
Isotype	IgG
Clonality	Polyclonal
Concentration	1 mg/ml
Observed band	67kDa
GenelD (Human)	7439
Human Swiss-Prot No.	O76090
Cellular localization	Cell membrane
Alternative Names	BEST antibody, Bestrophin-1 antibody, Best disease antibody, VMD 2 antibody
Background	Bestrophins were first found by genetic linkage of human-Bestrophin-1 (hBest1) to a juvenile form of macular degeneration called Best vitelliform macular dystrophy (BVMD). Forms calcium-sensitive chloride channels.



Western blot analysis of 1) PC3, 2) Mouse Brain Tissue, 3) Rat Brain Tissue with Bestrophin-1 Rabbit pAb EA262 diluted at 1:2,000.



Immunohistochemical analysis of paraffin-embedded Rat Brain Tissue using Bestrophin-1 (EA262) Rabbit pAb diluted at 1:200.