



ELK Biotechnology

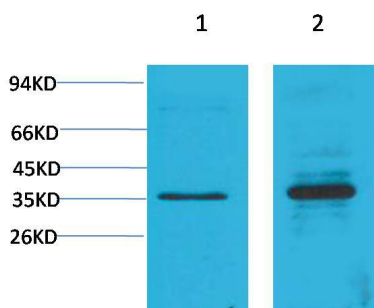
Cyclin D1 Rabbit pAb

Catalog NO.: EA245

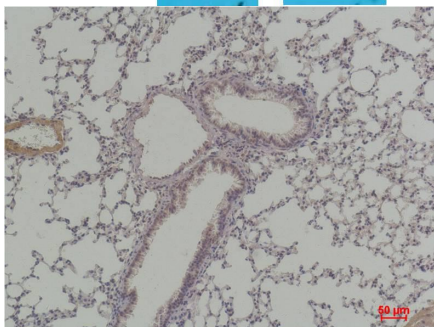
For research use only.

Overview

Product name	Cyclin D1 Rabbit polyclonal antibody
Source	Rabbit
Applications	WB, IHC
Species reactivity	Rat, Mouse
Recommended dilutions	WesternBlot:1/500-1000 Immunohistochemistry:1/100-200 NOTE: Optimal dilutions should be determined by the end user.
Immunogen	Recombinant Protein
Species	Human
Storage	PBS with 0.02% sodium azide and 50% glycerol pH 7.4. Store at -20° C. Avoid repeated freeze-thaw cycles.
Isotype	IgG
Clonality	Polyclonal
Concentration	1 mg/ml
Observed band	36kDa
GeneID (Human)	595
Human Swiss-Prot No.	P24385
Cellular localization	Nucleus
Alternative Names	B cell leukemia 1 antibody, BCL-1 antibody, CCND1 antibody, MGC137744 antibody, PRAD1 antibody
Background	Cyclin D is a member of the cyclin protein family that is involved in regulating cell cycle progression. The synthesis of cyclin D is initiated during G1 and drives the G1/S phase transition.



Western blot analysis of 1) C2C12, 2) Rat Heart Tissue with Cyclin D1 Rabbit pAb EA245 diluted at 1:2,000.



Immunohistochemical analysis of paraffin-embedded Mouse Lung Tissue using Cyclin D1 (EA245) Rabbit pAb diluted at 1:200.