



# ELK Biotechnology

$\alpha$  -actinin Rabbit pAb

Catalog NO.: EA230

For research use only.

## Overview

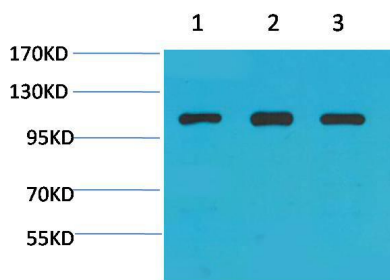
---

Product name	$\alpha$ -actinin Rabbit polyclonal antibody
Source	Rabbit
Applications	WB, IHC
Species reactivity	Rat, Mouse
Recommended dilutions	<b>WesternBlot:1/1000-2000</b> <b>Immunohistochemistry:1/200-500</b> <b>NOTE: Optimal dilutions should be determined by the end user.</b>
Immunogen	Recombinant Protein
Species	Human
Storage	PBS with 0.02% sodium azide and 50% glycerol pH 7.4. Store at -20° C. Avoid repeated freeze-thaw cycles.
Isotype	IgG
Clonality	Polyclonal
Concentration	1 mg/ml
Observed band	<b>103kDa</b>
GeneID (Human)	87
Human Swiss-Prot No.	P12814
Cellular localization	Cell junction, Cell membrane, Cell projection, Cytoplasm, Cytoskeleton, Membrane
Alternative Names	actinin 1 smooth muscle antibody, actinin alpha 1 antibody, ACTN 1 antibody, FLJ40884 antibody

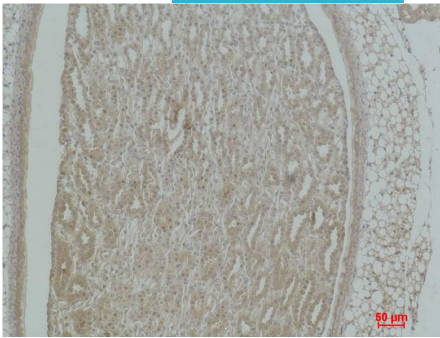
## Background

$\alpha$  -Actinin belongs to the spectrin family of cytoskeletal proteins.  $\alpha$  -Actinin is necessary for the attachment of actin filaments to the Z-lines in skeletal muscle cells, and to the dense bodies in smooth muscle cells. The functional protein is an anti-parallel dimer, which cross-links the thin filaments in adjacent sarcomeres, and therefore coordinated contractions

between sarcomeres in the horizontal axis.



Western blot analysis of 1) 3T3, 2)PC12, 3)Rat Heart Tissue with  $\alpha$ -actinin Rabbit pAb EA230 diluted at 1:2,000.



Immunohistochemical analysis of paraffin-embedded Mouse Kidney Tissue using  $\alpha$ -actinin (EA230) Rabbit pAb diluted at 1:500.