



ELK Biotechnology

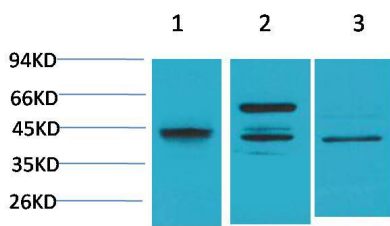
Caspase 8 Rabbit pAb

Catalog NO.: EA225

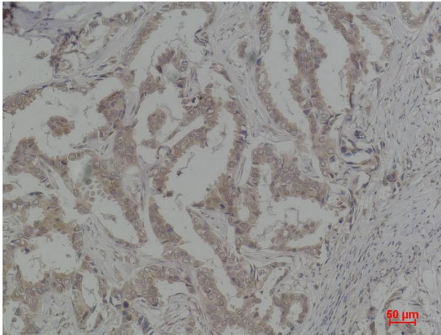
For research use only.

Overview

Product name	Caspase 8 Rabbit polyclonal antibody
Source	Rabbit
Applications	WB, IHC
Species reactivity	Human, Rat, Mouse
Recommended dilutions	WesternBlot:1/1000-2000 Immunohistochemistry:1/50-100 NOTE: Optimal dilutions should be determined by the end user.
Immunogen	Recombinant Protein
Species	Human
Storage	PBS with 0.02% sodium azide and 50% glycerol pH 7.4. Store at -20° C. Avoid repeated freeze-thaw cycles.
Isotype	IgG
Clonality	Polyclonal
Concentration	1 mg/ml
Observed band	43,57kDa
GeneID (Human)	841
Human Swiss-Prot No.	Q14790
Cellular localization	Cytoplasm
Alternative Names	ALPS2B antibody, Apoptosis cysteine protease antibody, CAP4 antibody, CED3 antibody, MCH5 antibody
Background	Caspase-8 is a caspase protein, encoded by the CASP8 gene. It most likely acts upon caspase-3. Activated caspase-8 cleaves and activates downstream effector caspases such as caspase-1, -3, -6, and -7.



Western blot analysis of 1) HeLa, 2)Raw 264.7, 3)PC12 with Caspase 8 Rabbit pAb EA225 diluted at 1:2,000.



Immunohistochemical analysis of paraffin-embedded Human Breast Carcinoma using Caspase 8 (EA225) Rabbit pAb diluted at 1:100.