



ELK Biotechnology

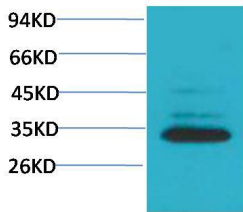
Caspase 3 Rabbit pAb

Catalog NO.: EA221

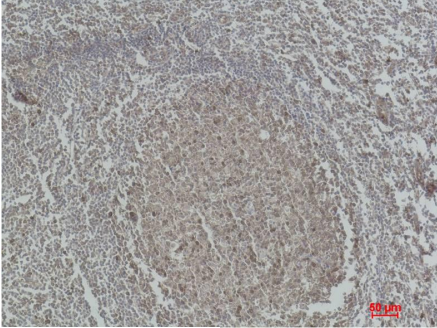
For research use only.

Overview

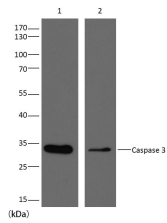
Product name	Caspase 3 Rabbit polyclonal antibody
Source	Rabbit
Applications	WB, IHC
Species reactivity	Human
Recommended dilutions	WesternBlot:1/1000-2000 Immunohistochemistry:1/200-500 NOTE: Optimal dilutions should be determined by the end user.
Immunogen	Recombinant Protein
Species	Human
Storage	PBS with 0.02% sodium azide and 50% glycerol pH 7.4. Store at -20° C. Avoid repeated freeze-thaw cycles.
Isotype	IgG
Clonality	Polyclonal
Concentration	1 mg/ml
Observed band	32kDa
GenelD (Human)	836
Human Swiss-Prot No.	P42574
Cellular localization	Cytoplasm
Alternative Names	APOPAIN antibody, CASP 3 antibody, CPP32 antibody, Cysteine protease CPP32 antibody
Background	Caspase-3 (CPP-32, Apoptain, Yama, SCA-1) is a critical executioner of apoptosis, as it is either partially or totally responsible for the proteolytic cleavage of many key proteins such as the nuclear enzyme poly(ADP-ribose) polymerase (PARP).



Western blot analysis of HeLa with Caspase 3 Rabbit pAb EA221 diluted at 1:2,000.



Immunohistochemical analysis of paraffin-embedded Human Tonsil Tissue using Caspase 3 (EA221) Rabbit pAb diluted at 1:500.



Western blot analysis of extracts from HeLa (Lane 1), Rat Brain (Lane 2), using Caspase 3 diluted at 1:2,000.