



# ELK Biotechnology

SOD1 Rabbit pAb

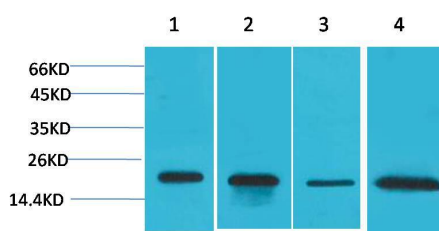
Catalog NO.: EA197

For research use only.

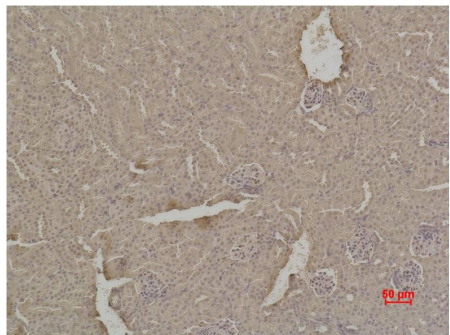
## Overview

---

Product name	SOD1 Rabbit polyclonal antibody
Source	Rabbit
Applications	<b>WB, IHC</b>
Species reactivity	<b>Human, Rat, Mouse</b>
Recommended dilutions	<b>WesternBlot:1/2000-5000</b> <b>Immunohistochemistry:1/200-500</b> <b>NOTE: Optimal dilutions should be determined by the end user.</b>
Immunogen	Recombinant Protein
Species	Human
Storage	PBS with 0.02% sodium azide and 50% glycerol pH 7.4. Store at -20° C. Avoid repeated freeze-thaw cycles.
Isotype	IgG
Clonality	Polyclonal
Concentration	1 mg/ml
Observed band	<b>18kDa</b>
GenelD (Human)	6647
Human Swiss-Prot No.	P00441
Cellular localization	Cytoplasm, Mitochondrion, Nucleus
Alternative Names	ALS1 antibody, Cu/Zn SOD antibody, Superoxide dismutase 1 antibody
Background	Superoxide dismutase [Cu-Zn] also known as superoxide dismutase 1 or SOD1 is an enzyme that in humans is encoded by the SOD1 gene, located on chromosome 21. SOD1 is one of three human superoxide dismutases.



Western blot analysis of 1) HeLa, 2) MCF7, 3) Mouse Brain Tissue, 4) Rat Brain Tissue, with SOD1 Rabbit pAb EA197 diluted at 1:2,000.



Immunohistochemical analysis of paraffin-embedded Mouse Kidney Tissue using SOD1 (EA197) Rabbit pAb diluted at 1:500.