



# ELK Biotechnology

eEF1A2 binding protein Rabbit pAb

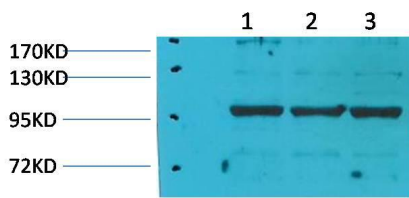
Catalog NO.: EA194

For research use only.

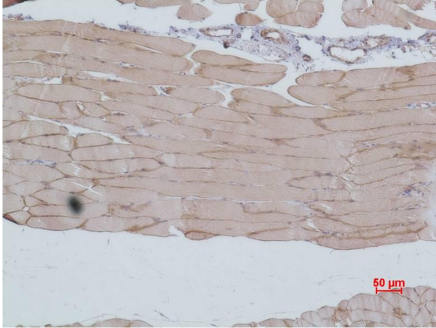
## Overview

---

Product name	eEF1A2 binding protein Rabbit polyclonal antibody
Source	Rabbit
Applications	WB, IHC
Species reactivity	Human, Rat, Mouse, Pg
Recommended dilutions	WesternBlot:1/2000-5000 Immunohistochemistry:1/200-500 NOTE: Optimal dilutions should be determined by the end user.
Immunogen	Recombinant Protein
Species	Human
Storage	PBS with 0.02% sodium azide and 50% glycerol pH 7.4. Store at -20° C. Avoid repeated freeze-thaw cycles.
Isotype	IgG
Clonality	Polyclonal
Concentration	1 mg/ml
Observed band	115kDa
GeneID (Human)	91156
Human Swiss-Prot No.	Q86VF2
Cellular localization	Cytoplasm, Nucleus
Alternative Names	IGFN1 antibody, immunoglobulin-like and fibronectin type III domain containing 1 antibody, EEF1A2BP1 antibody
Background	Elongation factor 1-alpha 2 is a protein that in humans is encoded by the EEF1A2 gene. This gene encodes an isoform of the alpha subunit of the elongation factor-1 complex, which is responsible for the enzymatic delivery of aminoacyl tRNAs to the ribosome.



Western blot analysis of 1) Pig Skeletal Muscle Tissue, 2) Rat Skeletal Muscle Tissue, 3) Rat Skeletal Muscle Tissue with eEF1A2 Rabbit pAb EA194 diluted at 1:5,000.



Immunohistochemical analysis of paraffin-embedded Mouse Skeletal Muscle Tissue using eEF1A2 (EA194) Rabbit pAb diluted at 1:500.