



ELK Biotechnology

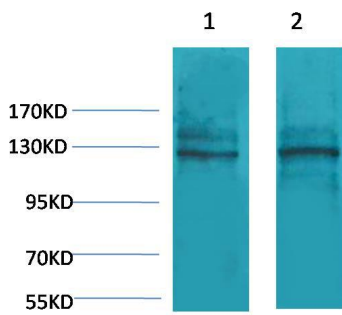
Calcium Sensing Receptor Rabbit pAb

Catalog NO.: EA190

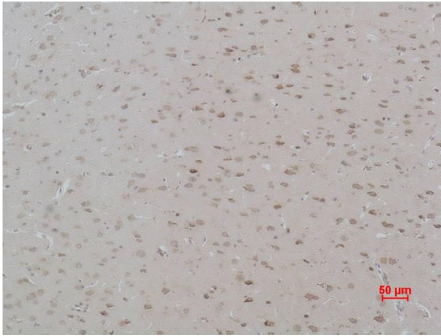
For research use only.

Overview

Product name	Calcium Sensing Receptor Rabbit polyclonal antibody
Source	Rabbit
Applications	WB, IHC
Species reactivity	Rat, Mouse
Recommended dilutions	WesternBlot:1/500-1000 Immunohistochemistry:1/200-500 NOTE: Optimal dilutions should be determined by the end user.
Immunogen	Synthetic Peptide
Species	Human
Storage	PBS with 0.02% sodium azide and 50% glycerol pH 7.4. Store at -20° C. Avoid repeated freeze-thaw cycles.
Isotype	IgG
Clonality	Polyclonal
Concentration	1 mg/ml
Observed band	130kDa
GeneID (Human)	846
Human Swiss-Prot No.	P41180
Cellular localization	Cell membrane
Alternative Names	Ca ²⁺ sensing receptor antibody, CASR antibody, EIG8 antibody, FIH antibody
Background	The calcium-sensing receptor (CaSR) is a Class C G-protein coupled receptor which senses extracellular levels of calcium ion. In the parathyroid gland, the calcium-sensing receptor controls calcium homeostasis by regulating the release of parathyroid hormone.



Western blot analysis of 1) Mouse Brain Tissue, 2)Rat Brain Tissue with Calcium Sensing Receptor Rabbit pAb EA190 diluted at 1:2,000.



Immunohistochemical analysis of paraffin-embedded Rat Brain Tissue using Calcium Sensing Receptor (EA190) Rabbit pAb diluted at 1:500.