



ELK Biotechnology

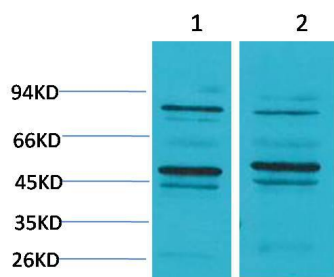
Bestrophin-2 Rabbit pAb

Catalog NO.: EA177

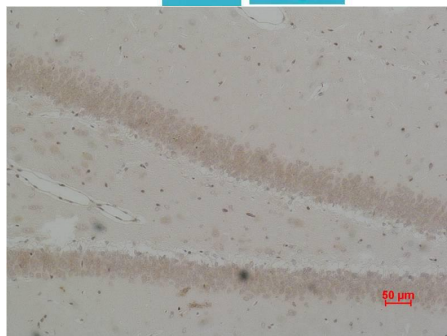
For research use only.

Overview

Product name	Bestrophin-2 Rabbit polyclonal antibody
Source	Rabbit
Applications	WB, IHC
Species reactivity	Rat, Mouse
Recommended dilutions	WesternBlot:1/500-1000 Immunohistochemistry:1/200-500 NOTE: Optimal dilutions should be determined by the end user.
Immunogen	Synthetic Peptide
Species	Human
Storage	PBS with 0.02% sodium azide and 50% glycerol pH 7.4. Store at -20° C. Avoid repeated freeze-thaw cycles.
Isotype	IgG
Clonality	Polyclonal
Concentration	1 mg/ml
Observed band	50kDa
GenelD (Human)	54831
Human Swiss-Prot No.	Q8NFU1
Cellular localization	Cell Membrane
Alternative Names	BEST 2 antibody, FLJ20132 antibody, Vitelliform macular dystrophy 2 homolog antibody
Background	The Bestrophins are a newly described family of anion channels unrelated in primary sequence to any previously characterized channel proteins. Two different topologies for Bestrophin-1 have been proposed.



Western blot analysis of 1)Mouse Brain Tissue, 2)Rat Brain Tissue with Bestrophin-2 Rabbit pAb EA177 diluted at 1:2,000.



Immunohistochemical analysis of paraffin-embedded Rat Brain Tissue using Bestrophin-2 (EA177) Rabbit pAb diluted at 1:500.