



ELK Biotechnology

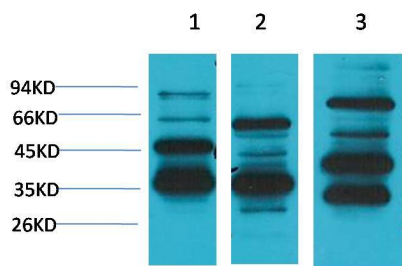
Angiotensin(1-7) Mas Receptor Rabbit pAb

Catalog NO.: EA176

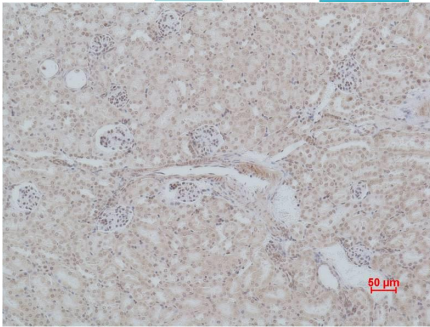
For research use only.

Overview

Product name	Angiotensin(1-7) Mas Receptor Rabbit polyclonal antibody
Source	Rabbit
Applications	WB, IHC
Species reactivity	Human, Rat, Mouse
Recommended dilutions	WesternBlot:1/2000-5000 Immunohistochemistry:1/200-500 NOTE: Optimal dilutions should be determined by the end user.
Immunogen	Synthetic Peptide
Species	Human
Storage	PBS with 0.02% sodium azide and 50% glycerol pH 7.4. Store at -20° C. Avoid repeated freeze-thaw cycles.
Isotype	IgG
Clonality	Polyclonal
Concentration	1 mg/ml
Observed band	36-50kDa
GenelD (Human)	4142
Human Swiss-Prot No.	P04201
Cellular localization	Cell membrane, Membrane
Alternative Names	Mas antiobdy, Mas1 antibody
Background	The angiotensin-(1-7) Mas receptor is the recently identified receptor of the biologically active heptapeptide angiotensin-(1-7).Angiotensin (Ang)-(1-7) is a metabolite of the well known peptide hormone Angiotensin (Ang) II, a key component of the renin-angiotensin system (RAS) that has a central role in cardiovascular homeostasis.



Western blot analysis of 1) Human Brain Tissue, 2) Mouse Brain Tissue, 3)Rat Brain Tissue with Angiotensin (1-7) Rabbit pAb EA176 diluted at 1:2,000.



Immunohistochemical analysis of paraffin-embedded Mouse Kidney Tissue using Angiotensin(1-7) Mas Receptor (EA176) Rabbit pAb diluted at 1:500.