



ELK Biotechnology

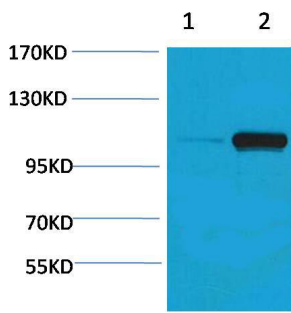
PEPC(Phospho Ser15) Rabbit pAb

Catalog NO.: EA149

For research use only.

Overview

Product name	PEPC(Phospho Ser15) Rabbit polyclonal antibody
Source	Rabbit
Applications	WB
Species reactivity	A. comosus, A. thaliana, H. vulgare, J. curcas, M. crystallinum, N. tabacum, Z. mays, T. weissfloggi
Recommended dilutions	WesternBlot:1/1000-2000 NOTE: Optimal dilutions should be determined by the end user.
Immunogen	Synthetic Peptide
Species	
Storage	PBS with 0.02% sodium azide and 50% glycerol pH 7.4. Store at -20° C. Avoid repeated freeze-thaw cycles.
Isotype	IgG
Clonality	Polyclonal
Concentration	1 mg/ml
Observed band	105-110kDa
GeneID (Human)	5225
Human Swiss-Prot No.	P20142
Cellular localization	Secreted
Alternative Names	PEPCase 1, PEPCase 3, PEPC 1, PEPC 3, phosphoenolpyruvate carboxylase
Background	PEPC (phosphoenolpyruvate carboxylase), belongs to an enzyme family of carboxy-lyases that is catalyzing adding fo carbon dioxide to phosphoenolpyruvate (PEP) to form oxaloacetate.



Western blot analysis of Maize 1)Dark, 2)Light, with phospho-PEPC Rabbit pAb EA149 diluted at 1:2,000.