



ELK Biotechnology

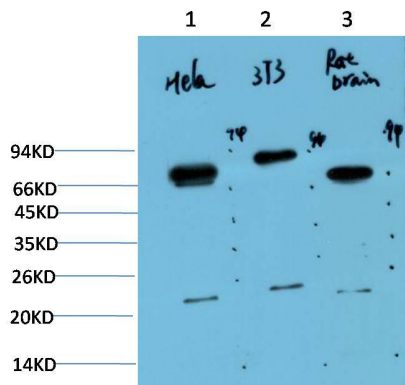
Ubiquitin (6G6) Mouse mAb

Catalog NO.: EM1296

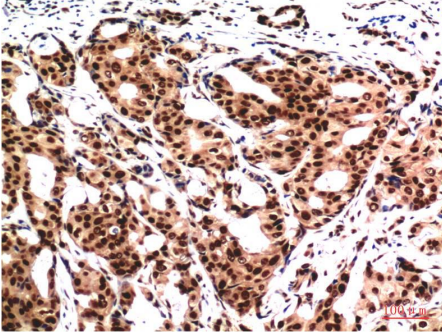
For research use only.

Overview

Product name	Ubiquitin (6G6) Mouse Monoclonal antibody
Source	Mouse
Applications	WB IHC
Species reactivity	Human Rat Mouse
Recommended dilutions	WesternBlot:1/1000-2000 Immunohistochemistry:1/100-200 NOTE: Optimal dilutions should be determined by the end user.
Immunogen	Synthetic Peptide
Species	Human
Storage	PBS with 0.02% sodium azide and 50% glycerol pH 7.4. Store at -20° C. Avoid repeated freeze-thaw cycles.
Isotype	IgG1
Clonality	Monoclonal
Concentration	1 mg/ml
Observed band	N/A
GenelD (Human)	7314
Human Swiss-Prot No.	PAN
Cellular localization	N/A
Alternative Names	N/A
Background	Ubiquitin is a conserved polypeptide unit that plays an important role in the ubiquitin-proteasome pathway. Ubiquitin can be covalently linked to many cellular proteins by the ubiquitination process which targets proteins for degradation by the 26S proteasome.



Western blot analysis of) HeLa Cell Lysate 2) 3T3 Cell Lysate 3) Rat Brain Tissue Lysate using Ubiquitin (EM1296) Mouse mAb diluted at:1000.



Immunohistochemical analysis of paraffin-embedded Human Breast Carcinoma Tissue using Ubiquitin (EM1296) Mouse mAb diluted at:200.