



ELK Biotechnology

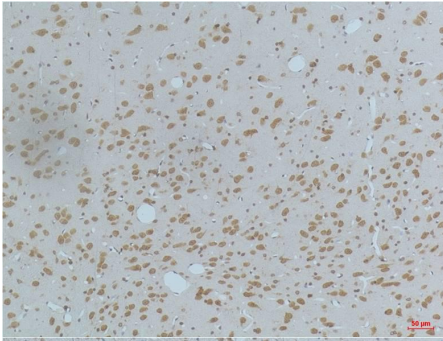
CaMKII $\beta / \gamma / \delta$ (Phospho Thr287) Mouse mAb

Catalog NO.: EM1222

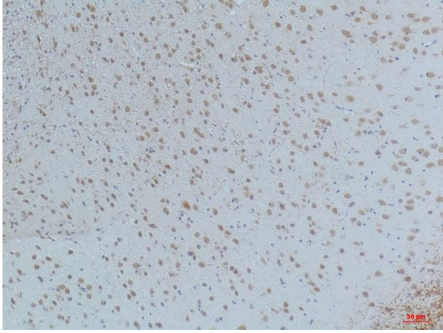
For research use only.

Overview

Product name	CaMKII $\beta / \gamma / \delta$ (Phospho Thr287) Mouse Monoclonal antibody
Source	Mouse
Applications	IHC
Species reactivity	Human Rat Mouse
Recommended dilutions	Immunohistochemistry:1/100-200 NOTE: Optimal dilutions should be determined by the end user.
Immunogen	Synthetic Peptide
Species	Human
Storage	PBS with 0.02% sodium azide and 50% glycerol pH 7.4. Store at -20° C. Avoid repeated freeze-thaw cycles.
Isotype	IgG1
Clonality	Monoclonal
Concentration	1 mg/ml
Observed band	50kDa
GeneID (Human)	816/817/818
Human Swiss-Prot No.	Q13554/Q13555/Q13557
Cellular localization	Cell junction synapsepresynaptic cell membrane
Alternative Names	Calcium/calmodulin dependent protein kinase IIKCC2A
Background	CaMKII is an important member of the calcium/calmodulin-activated protein kinase family functioning in neural synaptic stimulation and T-cell receptor signaling. CaMKII has catalytic and regulatory domains.



Immunohistochemical analysis of paraffin-embedded Rat Brain Tissue using CaMKIIβ/ γ /δ (Phospho Thr287) (EM1222)Mouse mAb diluted at:200.



Immunohistochemical analysis of paraffin-embedded Mouse Brain Tissue using CaMKIIβ/ γ /δ (Phospho Thr287) (EM1222)Mouse mAb diluted at:200.