



ELK Biotechnology

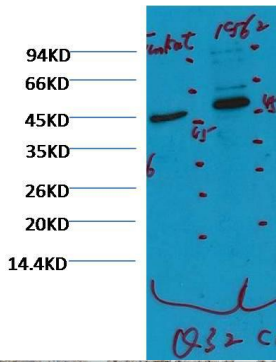
CD16 Mouse mAb

Catalog NO.: EM1090

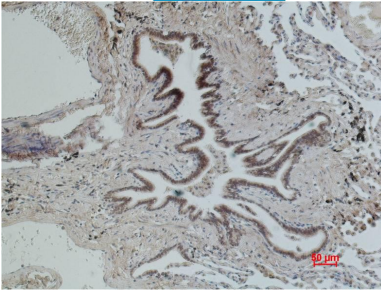
For research use only.

Overview

Product name	CD16 Mouse Monoclonal antibody
Source	Mouse
Applications	WB IHC Flow Cyt
Species reactivity	Human
Recommended dilutions	WesternBlot:1/1000-2000 Immunohistochemistry:1/100-200 NOTE: Optimal dilutions should be determined by the end user.
Immunogen	Synthetic Peptide
Species	Human
Storage	PBS with 0.02% sodium azide and 50% glycerol pH 7.4. Store at -20° C. Avoid repeated freeze-thaw cycles.
Isotype	IgG1
Clonality	Monoclonal
Concentration	1 mg/ml
Observed band	45kDa
GenelD (Human)	2214
Human Swiss-Prot No.	P08637
Cellular localization	Cell membrane Membrane Secreted
Alternative Names	CD16A CD16B Fc fragment of IgG Fc fragment of IgG low affinity IIIa receptor Fc gamma R3 FCGR3 FcR10 IgG Fc receptor III 2 Low affinity IIIa receptor
Background	CD16 is a low affinity Fc receptor.It is a cluster of differentiation found on the surface of natural killer cells neutrophil polymorphonuclear leukocytes monocytes and macrophages.



Western blot analysis of Jurkat 2)K562 CD16 Mouse mAb(Q32) diluted at:2000.



Immunohistochemical analysis of paraffin-embedded Human Lung Carcinoma using CD16 (EM1090) Mouse mAb diluted at:200.